

GITLEMAN

CONSTRUCTION + MAINTENANCE



INTEGRATED SECURITY SOLUTIONS.  
**MORE WAYS TO GET PEACE OF MIND.**

# WE'RE ALWAYS WATCHING OUT FOR YOU.

No two residential properties are exactly the same, and neither are their security needs. That's why Gittleman Construction and Maintenance (GCMC) offers a wide range of security solutions designed to meet the unique specifications of residential community associations.

From security surveillance systems and access control to building entry systems, our cost-effective solutions utilize current technology and standard protocols to provide consistent, easy to manage security that can be tailored to meet your requirements.







At GCMC, we start by performing a security audit of your premises to assess your existing conditions and vulnerabilities. Then we make recommendations based on our deep knowledge of community associations and the industry's best security products and systems.

When you trust your security needs to GCMC, you get the peace of mind that comes from knowing your property and tenants are being protected by proven, integrated solutions from the most reliable manufacturers.



# SECURITY CAMERA INSTALLATIONS

Protect your property from  
every camera angle.

The world of security cameras has  
taken a quantum leap forward.

Traditional security cameras delivered low resolution, grainy images that were often difficult to search and access. Those early DVRs had a limited life expectancy of 4 to 7 years, and data was lost on drive failure.

Today's high definition systems use servers to store digital video. Manufacturers provide easy-to-navigate and reliable video management software (VMS) that is continually updated to work with the thousands of cameras and devices on the market today. Separating hardware from software gives you the flexibility to choose and upgrade equipment and technology as it becomes available, while using up-to-date software that has a consistent user interface.

These new systems scale to meet your needs, with no limit to the number of cameras that can be added or upgraded. Storage capacity can also be increased as necessary. Best of all, these high-definition Internet Protocol (IP) cameras are now cheaper than their older analog predecessors.

# Recommended & Supported Solutions

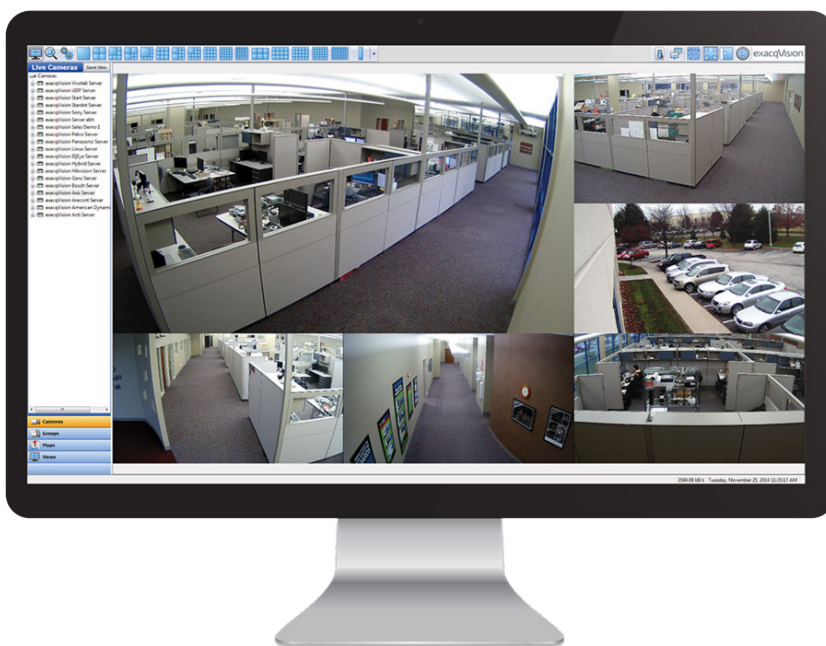
GCMC recommends ExacqVision Video Management Software (VMS) for its ease of use, reliability, support and training. In addition to support provided by the manufacturer, GCMC offers further in-house training and support to ensure best-in-class protocols for system installation and operation. We can teach your team how to maximize the functionality of systems across many different properties using standard software. After all, even the best technology is limited if operators do not know how to use it.



# exacqVision VMS Software

- Live camera feeds and playback are easy to access remotely through your PC, smartphone or tablet, with full connections into the server through a web or app-based interface.
- Three buttons—Live View, Playback and Settings—make navigating in a Windows based format easy.
- Search functions combine motion-based recording with the ability to search for motion in a particular area of a camera frame. You can quickly and easily export images and video in common jpeg and mpeg formats, or as court admissible watermarked content that contains the software required to view the footage.
- Easy-to-access online instructional videos simplify configuration and operation.
- ExacqVision constantly tests new cameras, equipment and technology, and updates their software to take advantage of the latest developments in the security industry.

**exacq**<sup>®</sup>  
Technologies

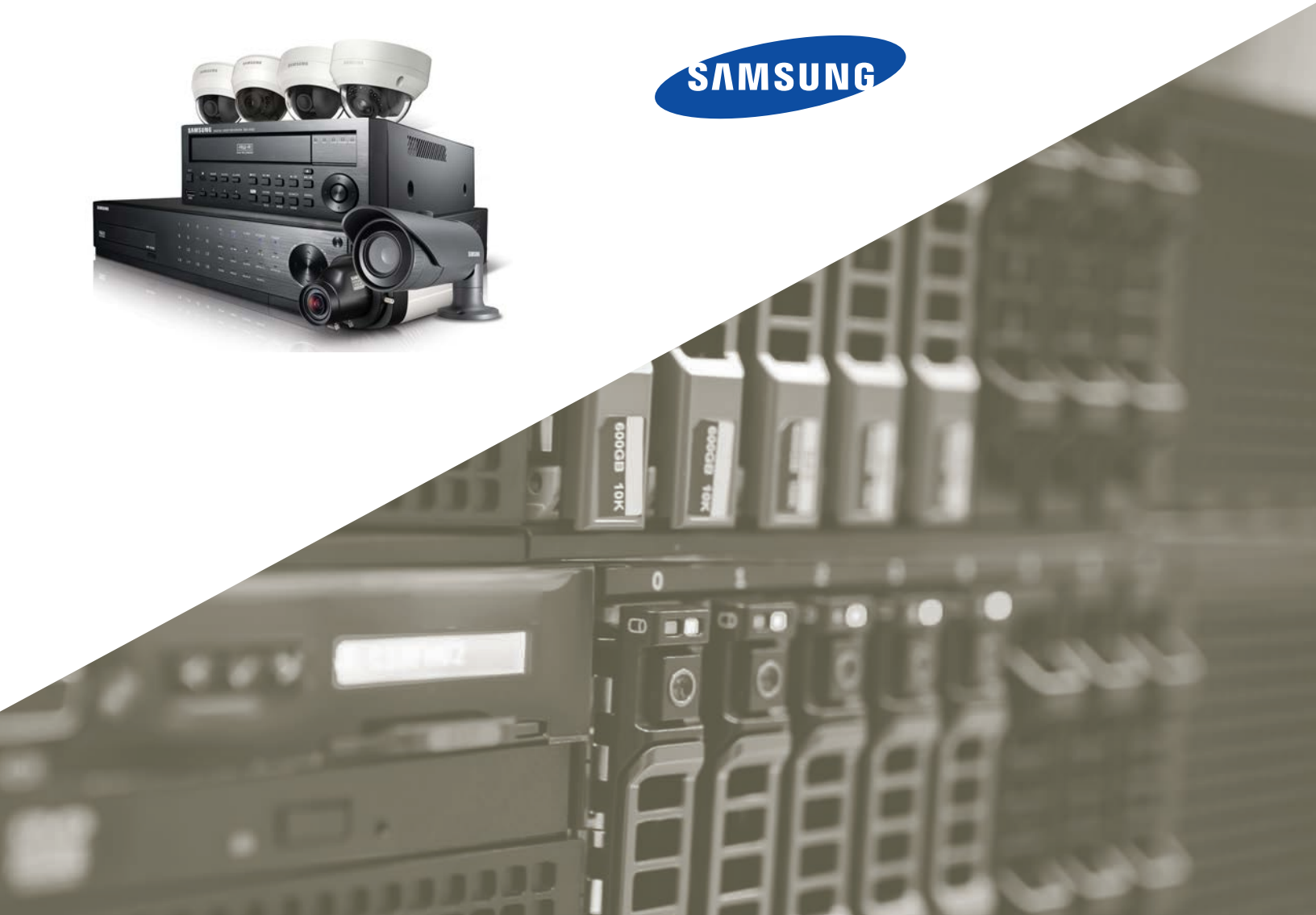


SECURITY CAMERA  
INSTALLATIONS



# Samsung Security Cameras & hardware

- ExacqVision VMS supports Samsung Security and all other major manufacturers of cameras and hardware.
- Samsung high definition digital IP cameras are high quality, reliable, and cover 90% of community association needs.
- 360-degree fisheye camera images can be de-warped into multiple views, enabling one camera to cover multiple views, i.e. entrances on four walls of a lobby.
- Commercial grade servers have interchangeable drives that use RAID controllers that automatically back up recording drives and restore them after failure/replacement.
- Power over Ethernet or Coax devices reduce installation costs. It allows existing wiring to transmit power to cameras, as well as send digital data back to the server for up to four cameras over a single cable.



# The latest advances in access technology make it easy to control who can get into your properties.

FOB or key card access systems are typically used on the main entry doors to buildings. These systems usually consist of an electronic door strike, a controller, and a card or FOB reader that's hardwired back to a control system. However, there are several manufacturers who now offer door access control solutions that have the card reader and mechanism contained wirelessly in the lock.

Data on Card systems use writeable cards that download audit trails and update the software control system the next time a card is presented at a wired door lock. This technology allows for retrofitting buildings, including residences, to provide access control of interior doors at a substantially lower cost than traditional systems. Door locks can be Bluetooth compatible using smartphones as credentials. Long-range card readers also allow for more secure automatic garage door entry without the need for push button battery operated FOBs.

GCMC will work with you to find the manufacturer and products that best meet your unique needs.



## DOOR ACCESS CONTROL SYSTEMS

Redefining safety and security, one door at a time.





## Recommended & Supported Solutions

GCMC supports several access control platforms that are designed to meet the requirements of different community association managed buildings. We also support other access control providers, and in some cases can convert them to a fully supported and managed system without having to replace credentials and readers.

### KANTECH ACCESS CONTROL

- Integrated seamlessly with ExacqVision.
- Fully supported, managed and hosted by GCMC.
- Easy-to-use software that's fully scalable so you can add future entry points and users.
- Full range of card readers and door controllers for all hard wired entry points.
- Robust, cost-effective solution for existing installations or new perimeter door access control.

**KANTECH**  
*From Tyco Security Products*





## DOOR ACCESS CONTROL SYSTEMS







## DATA ON CARD SYSTEM

- Unique wire free networked access control solution.
- Cost-effective alternative to traditional hardwired systems, ideally suited to retrofitting interior doors, including residences.
- Established global provider of innovative access control solutions since 2001.
- Data on card system allows remote offline locks that use RFID cards to transmit audit trails and credentials to and from locks. Wireless network option provides real-time audits.
- Virtually unbreakable data encryption provides multi-application convenience on one credential.
- Infinitely scalable solutions for every type of lock, including padlocks.
- Can be opened by Bluetooth smartphones with appropriate authorization.



## LONG RANGE READERS FOR GARAGE ACCESS

- Secure long-range readers open garage doors automatically on entry and exit.
- Temporary cards can be issued with time restrictions and limits to control unauthorized access.
- Compatible with all supported door access control solutions.
- RFID encrypted window sticker has no batteries or mechanical buttons and cannot be stolen and reused.
- Virtually unbreakable encryption of data.



# DOOR ENTRY & INTERCOM SYSTEMS

Security at your fingertips.

Replacement door entry systems  
now need only an internet  
connection.





Door entry systems or call boxes typically use an analog keypad to call up to a hardwired receiver or phone in the residence. Programming is either accomplished at the entry system or remotely through a modem. Once entry is granted, a controller releases an electric door strike.

With the introduction of IP technology, today's door entry systems can allow remote monitoring and programming, which improves security, response times and ease of use. Replacement door entry systems now only need an Internet connection to send requests to the recipient's smartphone. Today's entry systems can also feature high resolution cameras that send video feed to smartphones.





## DOOR ENTRY & INTERCOM SYSTEMS

### Recommended & Supported Solutions

GCMC not only offers and supports proven door entry systems, we are currently developing a fully integrated solution that incorporates FSR's Connect homeowner database. It will allow automatic real-time updates to door entry systems of authorized users, and update changes that take place within the Connect database.



## BUTTERFLYMX

- Photographs and time stamps every door access event.
- Easy-to-use, intuitive web portal.
- Building-wide messaging capabilities.
- Cloud-based storage.
- Touch screen entry interface is configurable and updates automatically.
- Smartphone app with video capabilities notifies residents of entry requests and enables approved access.
- Mobile app keeps log of visitors and photo stamps.
- Visitors can leave voice, text or video messages that are accessible from the mobile app.
- Virtual Bluetooth key enables residents to allow timed access to guests or service personal.
- Fully supported and managed by GCMC for a low per residence annual fee that allows multiple users per residence.



“As an office manager who manages a large condominium in downtown Minneapolis, we recently had some problems with theft. I reached out to Gittleman Maintenance since I had recently heard of their new Security Integrations Division. I have to say, my experience was a very positive one. Within a few days, I had a technician out, Eric Hanson, reviewing what cameras we had, what programs we were running and went as far as walking our property, exterior and interior, to find ways to better secure our property.

After reviewing our property, I was sent a proposal of work that needed to be done along with additional comments and suggestions. Eric was very thorough and answered all questions and concerns I had. He later came out, did the work and followed up after the work was completed. It been months and Eric frequently checks on our system and the additional work that was done. Any issues we have I feel he's just a phone call away. I have been very impressed with the Security integrations Division that was added to Gittleman Maintenance, I had exceptional customer service.

Thanks Gittleman Maintenance for making all of us feel safe and secure in our building!” — V.A.

“I can confidently say that Gittleman Maintenance has one of the best low-voltage teams in the area.” — J.M.



WHAT OUR  
CLIENTS  
ARE SAYING





“I would like to submit a testimony for the outstanding service of Eric Hanson and the Gittleman Security/ Low-Voltage department.

After working with multiple security companies in the Minneapolis region, I can confidently say that Gittleman Maintenance has one of the best low-voltage teams in the area. We recently underwent a total camera and door access systems upgrade and the homeowners of the association have never felt more confident in the security system surrounding their home. Since the installation, the City of Minneapolis has been able to make multiple arrests and even a conviction of one of Minneapolis’ most wanted based on the video and fob record evidence we were able to provide.

Eric Hanson provides a customer service experience that is hard to match. Considering the substantial size and cost of the project, my faith in his abilities never once waived. The systems upgrade affected over 550 residents and Eric was able to give me all the support and training I needed to ensure the transition was smooth. Eric is knowledgeable about the products and is a true master of his craft. I will absolutely be bringing Eric Hanson and the Gittleman team on to every one of my properties.” — J.M.

Working with Gittleman Construction and Maintenance for my low voltage/security needs was an absolute pleasure. Their staff was knowledgeable and efficient throughout the process. I especially appreciated the assistance in identifying potential areas of risk and choosing credentials that would best suit the needs of the homeowners. Additionally, the forward thinking of the technicians to ensure compatibility with future upgrades to the building's door access control system was extremely beneficial.

— A.K.

“I especially  
appreciated the  
assistance in  
identifying potential  
areas of risk” — A.K.





WHAT ARE  
CLIENTS ARE SAYING

GITTLEMAN

**CONSTRUCTION + MAINTENANCE**

1015 Glenwood Avenue North, Suite 100  
Minneapolis, MN 55405

**phone** 952.567.6840

**web** [gittlemanconstruction.com](http://gittlemanconstruction.com)

**email** [service@gittleman.com](mailto:service@gittleman.com)

A FirstService  
Residential Company



**FirstService**  
Residential Management